

105-101 Hemisphere Anti-skate Stud



Above. Shown with machine polished finish

Description

Manufactured from 316 grade steel.

Satin polish finish as standard.

Constructed from non corrosive material.

M8 x 25mm stud to be resin fixed to concrete, stone or timber.

Decorative feature anti-skating device.

Standard Dimensions

ø35 x 42.5mm (L)

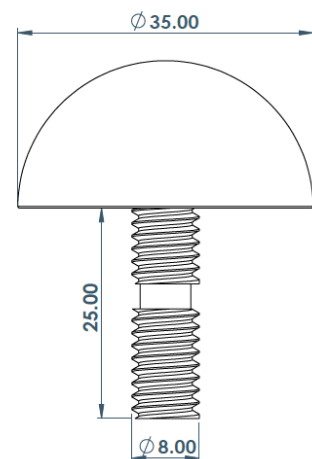
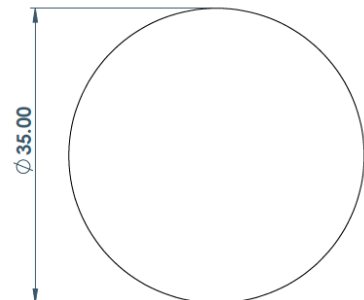
Bespoke Options

304 Grade stainless steel - Bronze - Aluminium - Anodised Aluminium

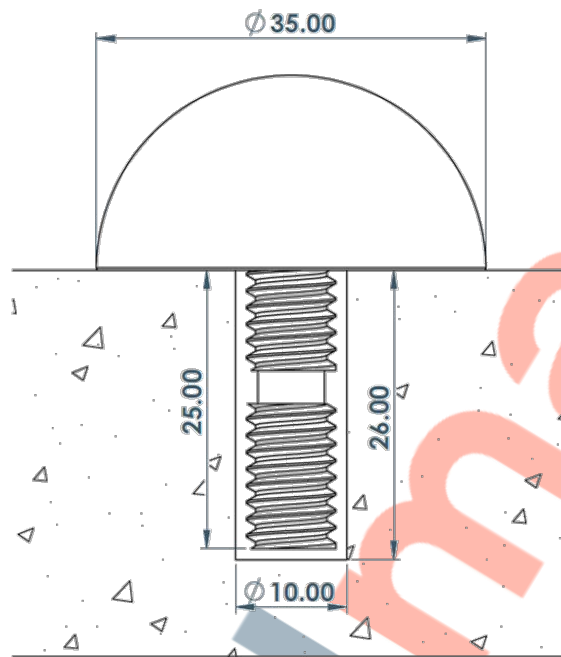
Mirror polish finish - Sandblasted Finish - Anodise to any RAL colour

Bespoke sizing

Full installation service - POA



105-101 Hemisphere Anti-skate Stud Installation



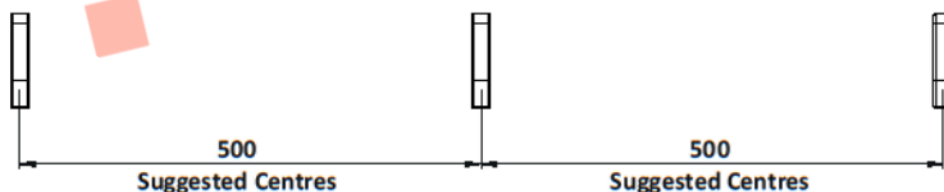
Installation

1. Drill holes 10mm in diameter to the depths shown above..
2. Remove dust and debris caused by drilling.
3. Following the product guidelines, found on the Resin tube, pour a sufficient amount to fill the drilled hole.
4. Push the stud into the hole firmly ensuring an edge seal around the entire stud
5. Allow a few minutes for the Polymer Modified Adhesive to set.

Cleaning & Maintenance

This product is designed for all weather exposure requiring only minimal maintenance as detailed below.

Stainless Steel: Manufactured from premium grade stainless steel. Maintenance free, inspect fixing every 6 months. Add additional Adhesive where required.



DATASHEET

105-101 Hemisphere Anti-skate Stud

