

200-302 Cross Hatch Brass Tactile Stud, 25mm

Above. Shown with machined polished finish

Description

Manufactured from Brass.

Machined polish finish as standard.

Constructed from non corrosive material.

Long Service life.

Comes with a chamfered edge and anti-slip cross hatch pattern.

Dimensions

25mm ϕ x 30mm x 5mm thick top

M10 thread

Options

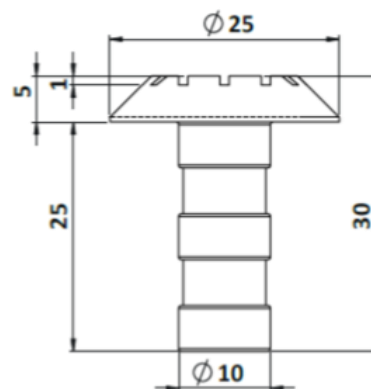
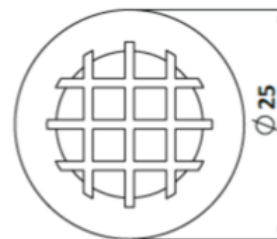
Diameter options: 20mm - 120mm

Material Options

Aluminium - Brass - Bronze

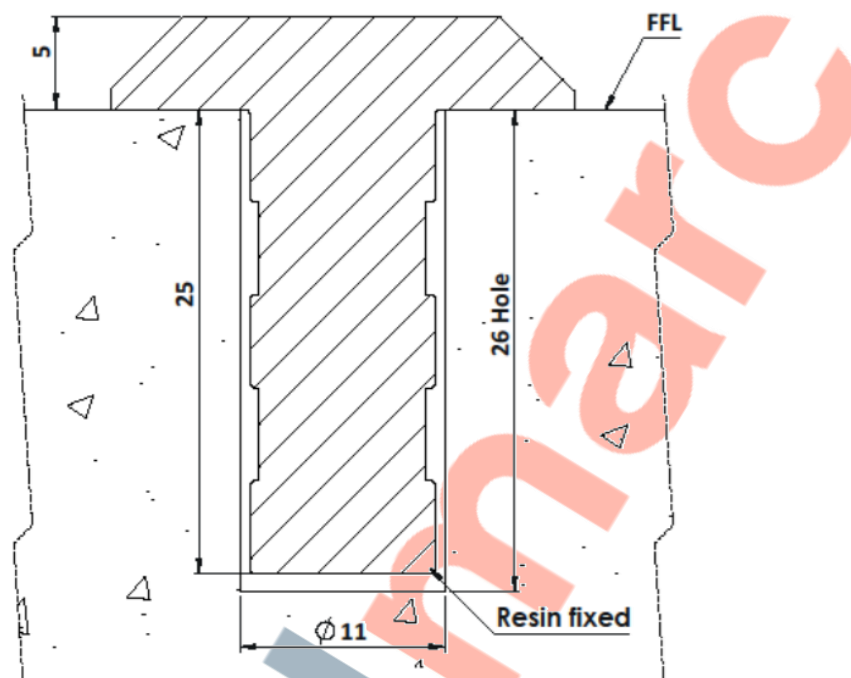
Finishing Options

Burnt - Bright Polish - Sandblasted - Plain Top



Full installation service - POA

200-302 Cross Hatch Brass Tactile Stud Installation



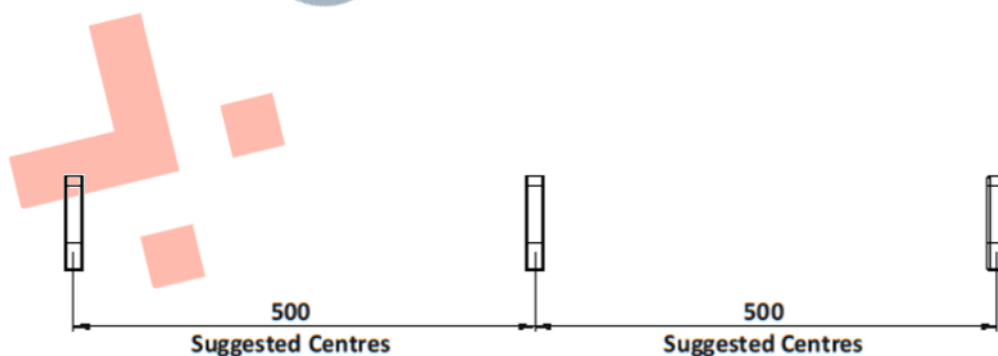
Installation

1. Drill holes 11mm in diameter to the depths shown above.
2. Remove dust and debris caused by drilling.
3. Following the product guidelines, found on the Resin tub, pour a sufficient amount to fill the drilled hole.
4. Push the stud into the hole firmly ensuring an edge seal around the entire stud
5. Allow a few minutes for the Polymer Modified Adhesive to set.

Cleaning & Maintenance

This product is designed for all weather exposure requiring only minimal maintenance as detailed below.

Brass: Manufactured from premium Brass. Maintenance free, inspect fixing every 6 months. Add additional adhesive where required.



DATASHEET

200-302 Cross Hatch Brass Tactile Stud, 25mm

