

DATASHEET

202-202 Low Dome Plain Demarcation Stud, 40mm



Above. Shown with machined finish

Description

Manufactured from 316 Stainless Steel.
Machined polish finish as standard.
Constructed from non corrosive material.
Long Service life.
To be installed onto finish surface.

Dimensions

40mm \varnothing x 5mm thick top
50mm long x 8mm \varnothing threaded stud

Options

Diameter options: 15mm - 120mm

Fixing Pin Options

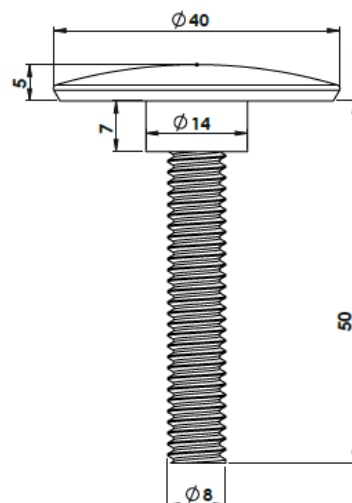
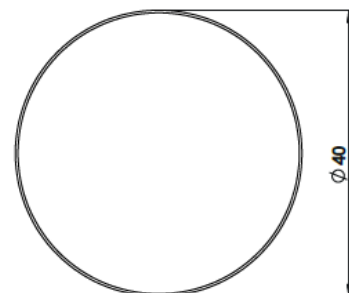
Self-adhesive - Welded pin - Machined pin - No pin

Finishing Options

Burnt - Bright Polish - Sandblasted - Engraving - Laser Etching -
Anti-Slip design suitable for car parks and public realm

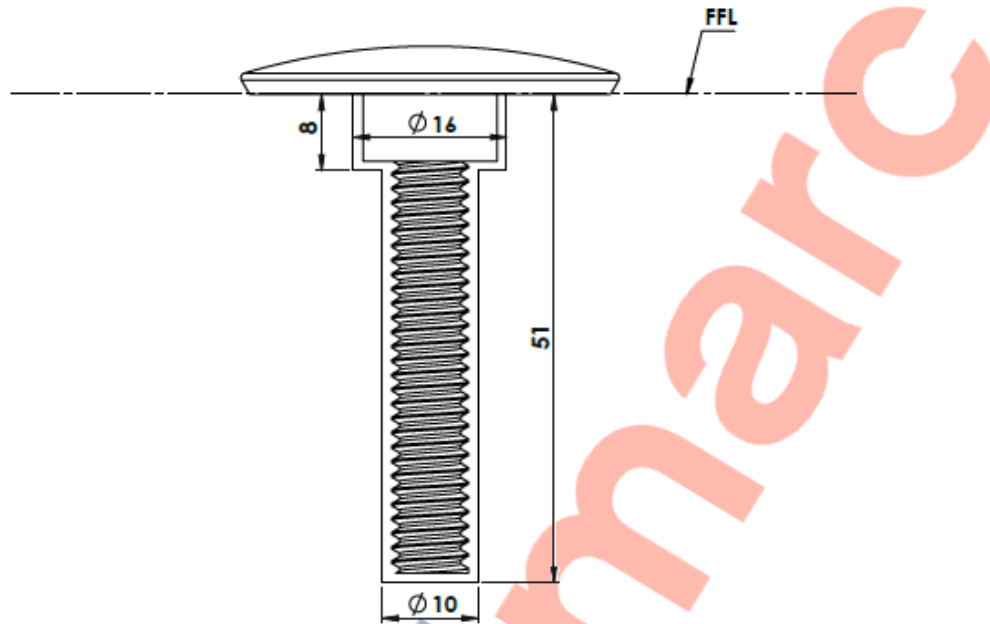
Material Options

Brass - Bronze - Aluminium



Full installation service - POA





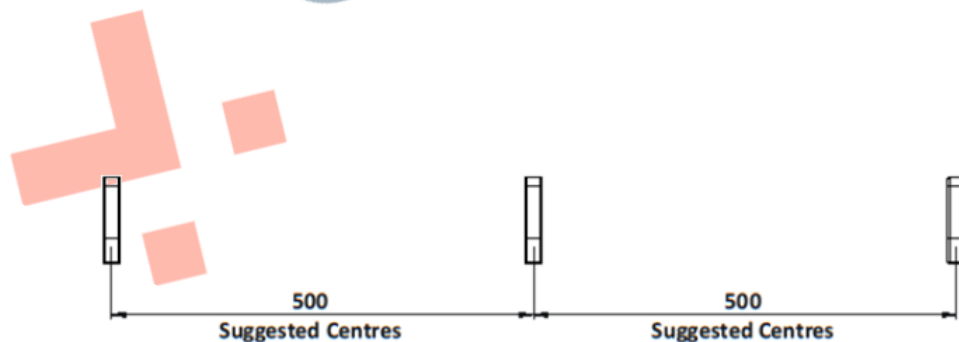
Installation

1. Drill holes 10mm in diameter and 16mm in diameter to the depths shown above.
2. Remove dust and debris caused by drilling.
3. Following the product guidelines, found on the Resin tube, pour a sufficient amount to fill the drilled hole.
4. Push the stud into the hole firmly ensuring an edge seal around the entire stud
5. Allow a few minutes for the Polymer Modified Adhesive to set.

Cleaning & Maintenance

This product is designed for all weather exposure requiring only minimal maintenance as detailed below.

Stainless Steel: Manufactured from premium Stainless Steel. Maintenance free, inspect fixing every 6 months. Add additional adhesive where required.



DATASHEET

202-202 Low Dome Plain Demarcation Stud, 40mm

